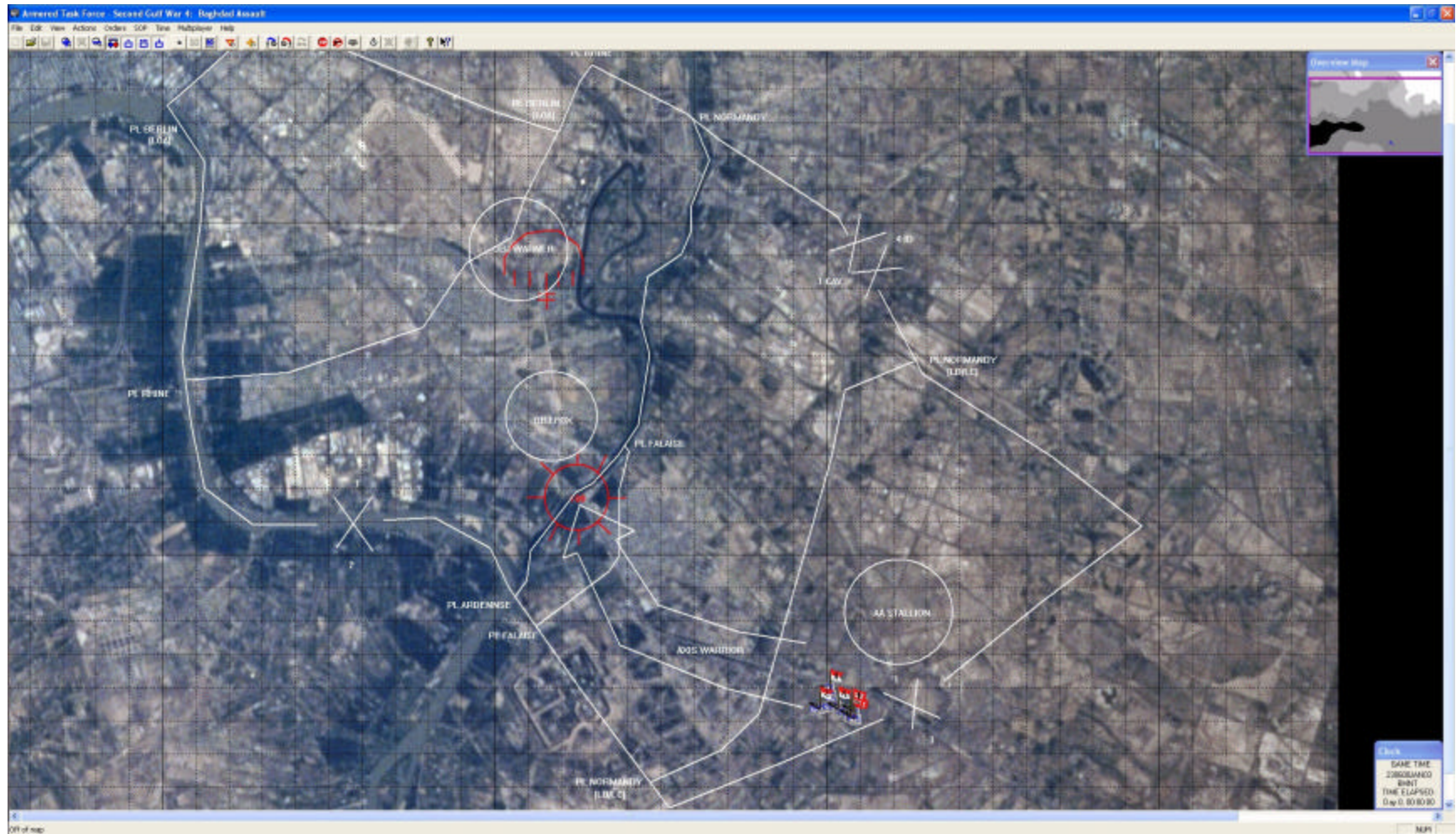


Scenario from ARMORED TASK FORCE



written by Maj P Proctor

*In the preceding picture I have drawn the operation/maneuver graphics in white so they stand out better.
The enemy SITTMP is in red.*

*At the end of this I have provided the following situation picture with the operation/maneuver graphics in blue and enemy
SITTEMP in red.*

Second Gulf War (Mission 4): Baghdad Assault

You are the commander of Team A / 2-5 CAV, attached to TF 2-8 CAV, 1 BCT, 1st Cavalry Division. After a three day running gunfight across Iraq, your division has finally arrived at the outskirts of Baghdad. The following is your battalion's OPOD (Operations Order) for the assault on the Iraqi capital.

OPOD 03-02?

TF 2-8 CAV (STALLIONS)

1. SITUATION:

A. ENEMY FORCES:

1. The spoiling attacks across the III Corps zone were largely unsuccessful. The Iraqi's have not had time to construct a defensive belt outside the city. They have used their time constructing defenses around key bridge crossing and MEVA's (Mission Essential Valuable Areas). Their intent is to conduct a break out on key air and land avenues of approach and evacuate as much force as possible to the northern mountain region of Iraq to continue operations.
- ? 2. 1 BCT faces the 12th MIBR (Mechanized Infantry Brigade). The enemy's mission is to defend NET 230600JAN03 to maintain control of RASHEED AIRBASE until the evacuation of forces from BAGHDAD can be completed. This brigade is currently at 66% strength, having lost an entire battalion in the spoiling attack earlier this morning. The enemy is currently positioned with two companies forward, conducting a defense of key bridge crossings on the NAHR DIYALA, and a reinforced MIB (Mechanized Infantry Brigade) defending the perimeter of the airbase.?
3. In our zone, an infantry company of the 2nd Battalion, 12th MIBR will defend with multiple dismounted strong points armed with AT-5's and RPG-7's forward along key roads and at the bridge crossing at the end of AXIS WARRIOR. To the rear, around OBJ WARNER, the company has positioned around 7 BMP-2 IFV's. The 12th MIBR is supported by a battalion of 18 2S3's (152mm, SP).?
4. The most likely course of action is that the enemy will defend in strong points and attempt to attrit the task force as it moves in zone to conduct the bridge crossing at PL ARDENNSE. The enemy will use lethal artillery fire indiscriminately throughout his sector to disrupt our movement.

B. FRIENDLY FORCES:

1. Higher Mission. 1 BCT, 1 CAV attacks NET 230600JAN03 to seize OBJ METRO <not shown> vic RASHEED AIRBASE in order to prevent the evacuation of enemy forces.?
2. To our left, 3 BCT attacks in zone to secure the left flank of the 1 CD and seize AL JAZIRA OIL REFINERY.

To our right, TF 2-5 CAV attacks as the initial BCT main effort to seize the key bridge crossing vic OBJ GOLDWIN <not shown>.

To our rear the, TF 1-12 CAV follows TF 2-5 and, on order, attacks as the main effort to seize OBJ METRO <not shown> vic RASHEED AIRBASE and prevent the evacuation of enemy forces.

C. WEATHER:

1. Winds are expected to be out of the southwest at approximately 5 miles per hour?
2. The hours of daylight are as follows. Before morning nautical twilight (BMNT) will begin at 0549. Sunrise will be at 0643. Sunset will be at 1834. Early evening nautical twilight (EENT) will end at 1934. Moonrise on the early morning of 23JAN02 is at 0140. Illumination will be at 90%, which will strongly favor the Iraqi's, who have a distinct disadvantage in night vision devices.

2. MISSION.

TF 2-8 CAV, 1 BCT, 1 CAV attacks in zone NET 230600JAN03 to seize OBJ WARNER and facilitate the TF 1-12 CAV attack to seize OBJ METRO <not shown> vic RASHEED AIRBASE and prevent the evacuation of enemy forces.

3. EXECUTION:

A. COMMANDER'S INTENT.

1. Key Tasks:

- a. Seize key bridge crossing along AXIS WARRIOR on PL ARDENNSE.?
- b. Secure key road network vic OBJ FOX. ?
- c. Seize OBJ WARNER to facilitate the TF 1-12 CAV attack to seize OBJ METRO <not shown> vic RASHEED AIRBASE and prevent the evacuation of enemy forces. ?
- d. Minimize collateral damage and proactively prevent injury or death of civilian non-combatants in zone.

2. Endstate.

TF 2-8 CAV positioned in hasty defensive positions vic OBJ FOX and OBJ WARNER.

B. CONCEPT OF THE OPERATION.

1. Maneuver.

This operation will be conducted in 3 phases.

a. Phase One.

This phase begins at 230600JAN03. TM B / 2-8 CAV attacks along AXIS BRONCO <not shown> to establish a Support By Fire position vic PL ARDENNSE overlooking bridge crossing. This phase ends when SBF 1 is established <not shown>.

b. Phase Two.

This phase begins when SBF 1 is established. TM A / 2-5 CAV attacks along AXIS WARRIOR to breach obstacles vic bridge crossing at PL ARDENNSE and seize OBJ FOX. TM C / 2-8 CAV follows and, o/o assumes the mission of TM A / 2-5 CAV. This phase ends when bridge crossing is cleared and TM A has seized OBJ FOX.?

c. Phase Three.

This phase begins when the bridge crossing at PL ARDENNSE is cleared and OBJ FOX is seized. TM C / 2-8 CAV moves through TM A / 2-5 CAV and attacks to seize OBJ WARNER. This phase ends when TM C / 2-8 CAV has established hasty defensive positions vic OBJ WARNER.

2. Fires.

No lethal indirect (artillery or mortar) fires will be employed inside BAGHDAD (See Appendix E, Rules of Engagement). During Phase Two, priority of fires is to B / 2-8 CAV. A / 1-82 FA fires AF3000, 10 minutes WP Smoke when TM A / 2-5 CAV crosses PL FALAISE.?

3. Tasks to Subordinate Units.

See Appendix C for Task Organization.

a. TM B / 2-8 CAV.

1. Attack along AXIS BRONCO <not shown>.
2. Establish SBF 1 <not shown>.

b. TM A / 2-5 CAV.

1. Attack along AXIS WARRIOR.?
2. Clear obstacles and enemy from key bridge crossing vic PL ARDENNSE.?
3. Seize OBJ FOX.

c. TM C / 2-8 CAV

1. Follow TM A / 2-5 CAV along AXIS WARRIOR.?
2. On order, clear obstacles and enemy from key bridge crossing vic PL ARDENNSE.?
3. On order, seize OBJ FOX.?
4. Seize OBJ WARNER and establish hasty defensive position.

4. Coordinating instructions.

a. Prior to 230600JAN03, the limit of advance for recon elements is PL ARDENNSE. This applies only to brigade COLT's and Task Force Scouts. The limit of advance for all other elements prior to LD is PL NORMANDY, the LD/LC.?

b. No lethal indirect fire (artillery or mortar) is authorized in zone. See Appendix E, Rules of Engagement, for more detailed instructions.

? c. PIR

<paragraph omitted>

4. SERVICE SUPPORT.

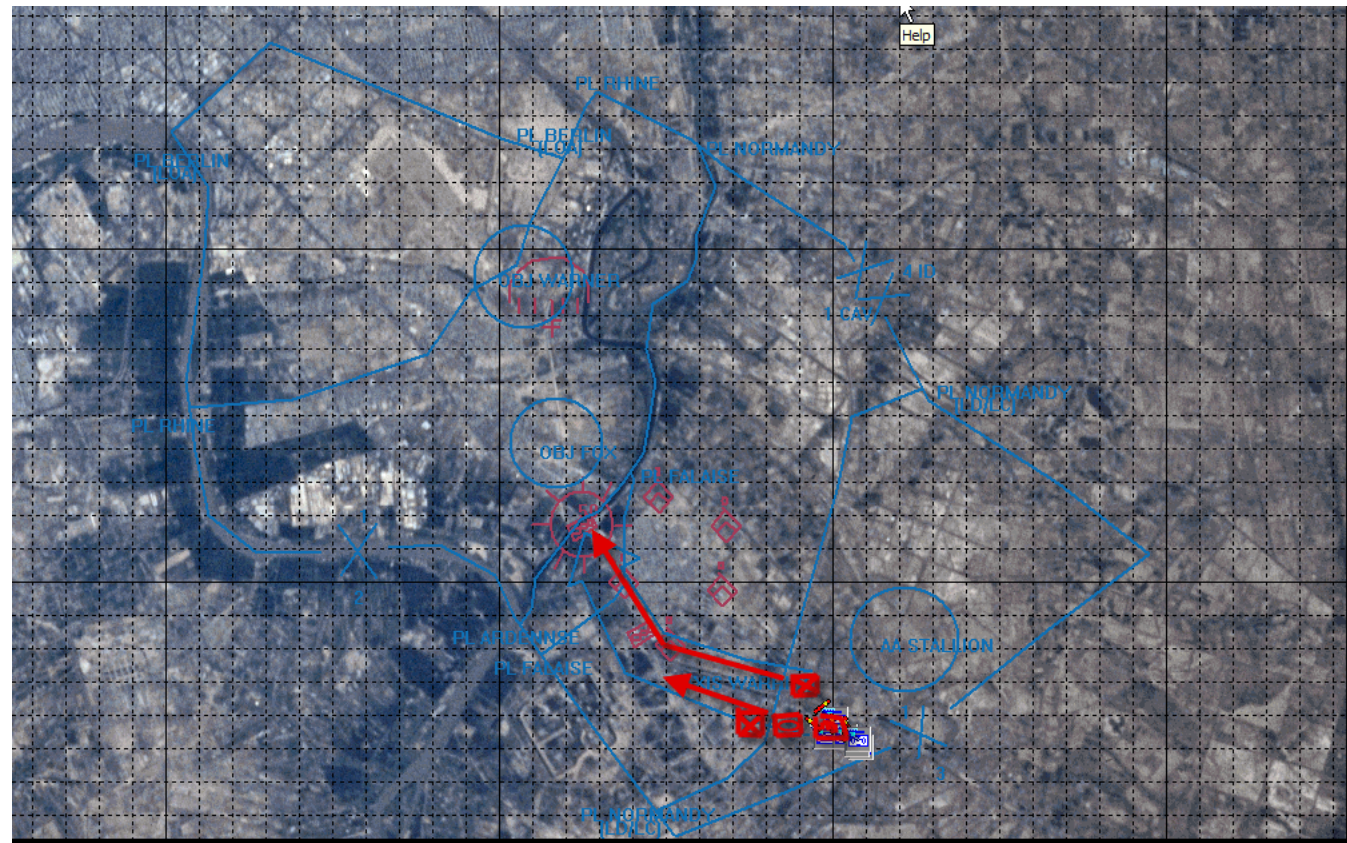
There will no resupply of any class of supply until mission completion.

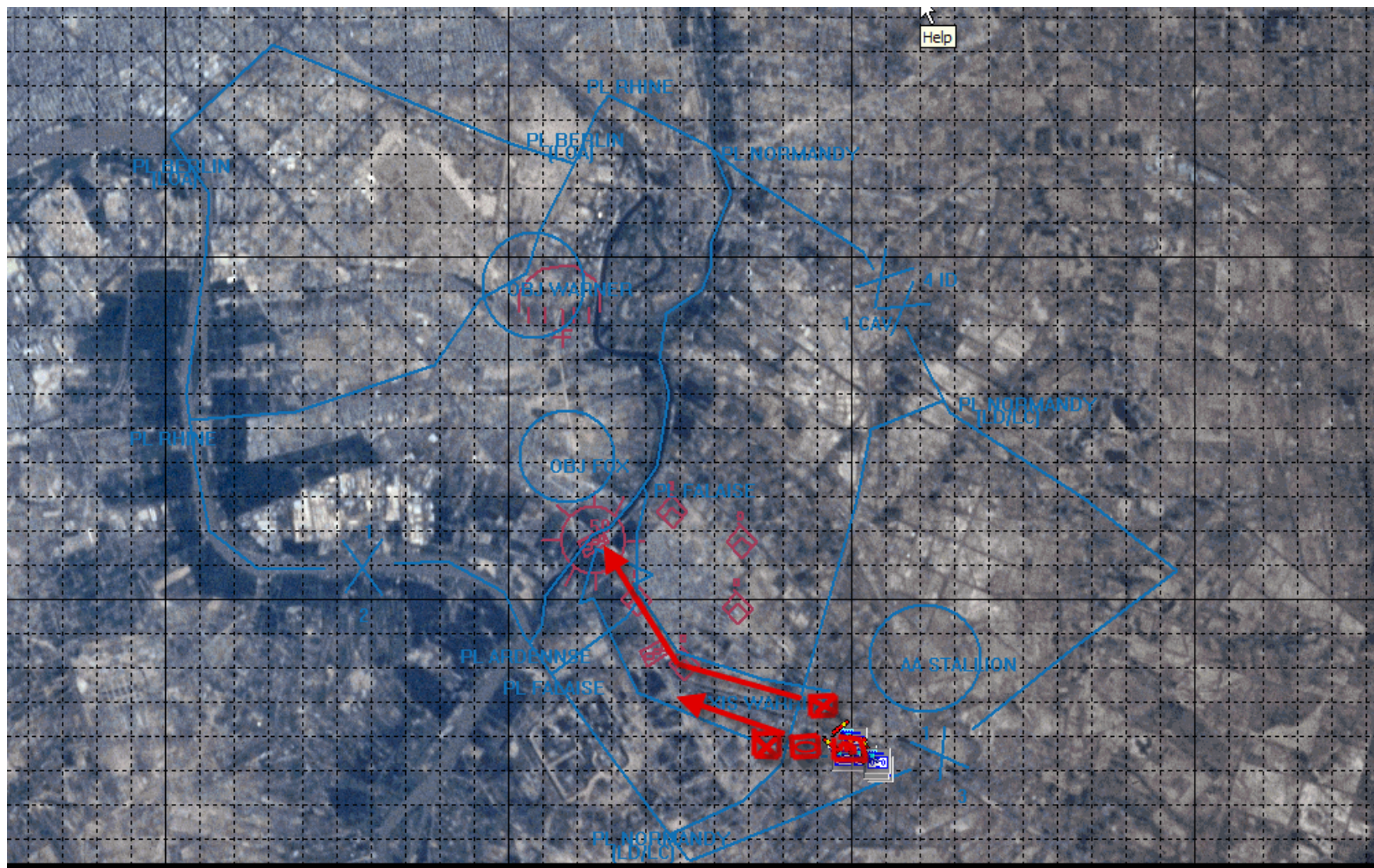
5. COMMAND AND SIGNAL.

A. Succession of command is per SOP? B. Current SOI is in effect.

Phase 1: Attack in zone along AXIS WARRIOR to establish support by fire position

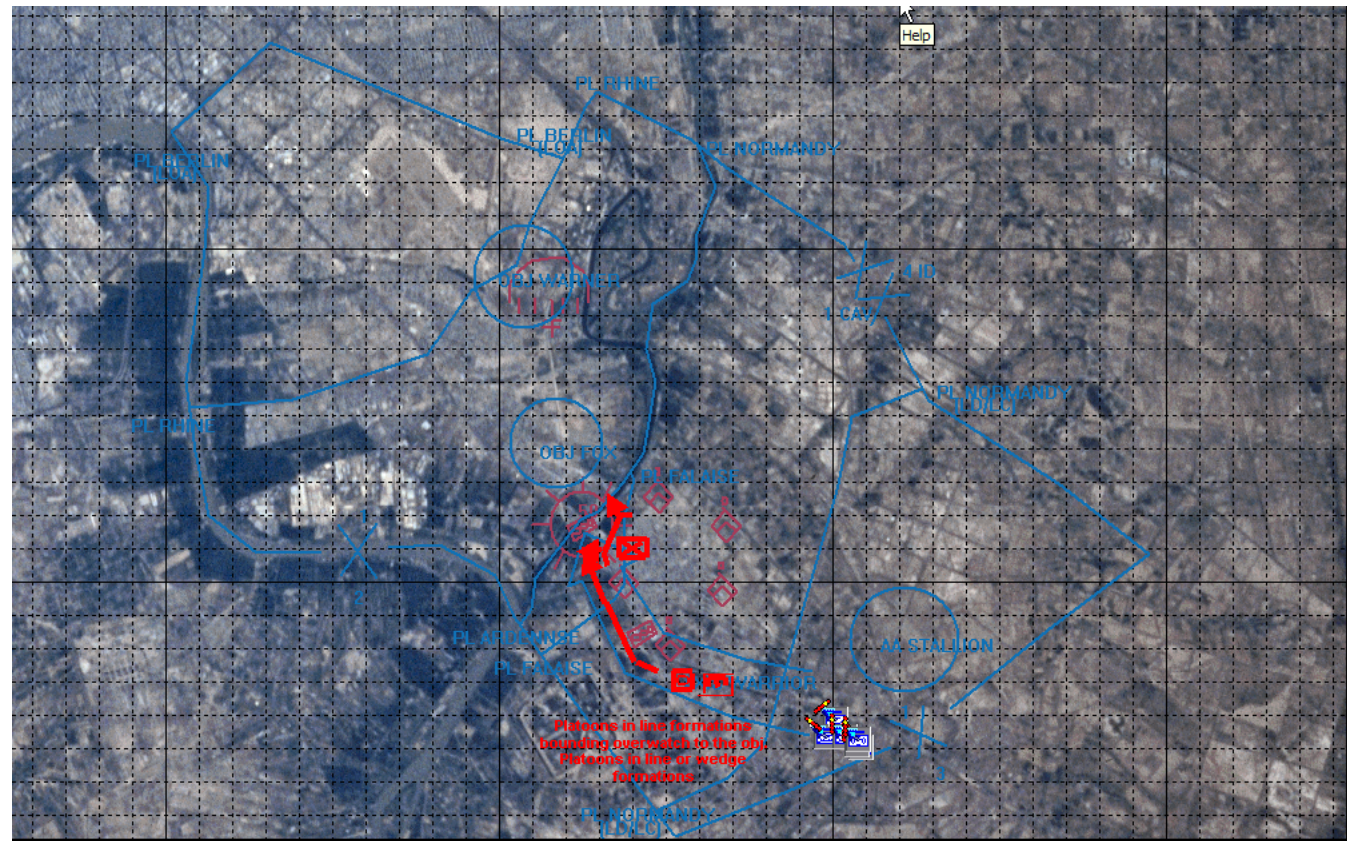
Our first objective, shown below, is to attack in zone to establish a support by fire position for crossing the bridge at PL ARDENNES. Use dismounted infantry to clear enemy from buildings on both sides of the street before sending any armor, mech, or engineering units down the street.



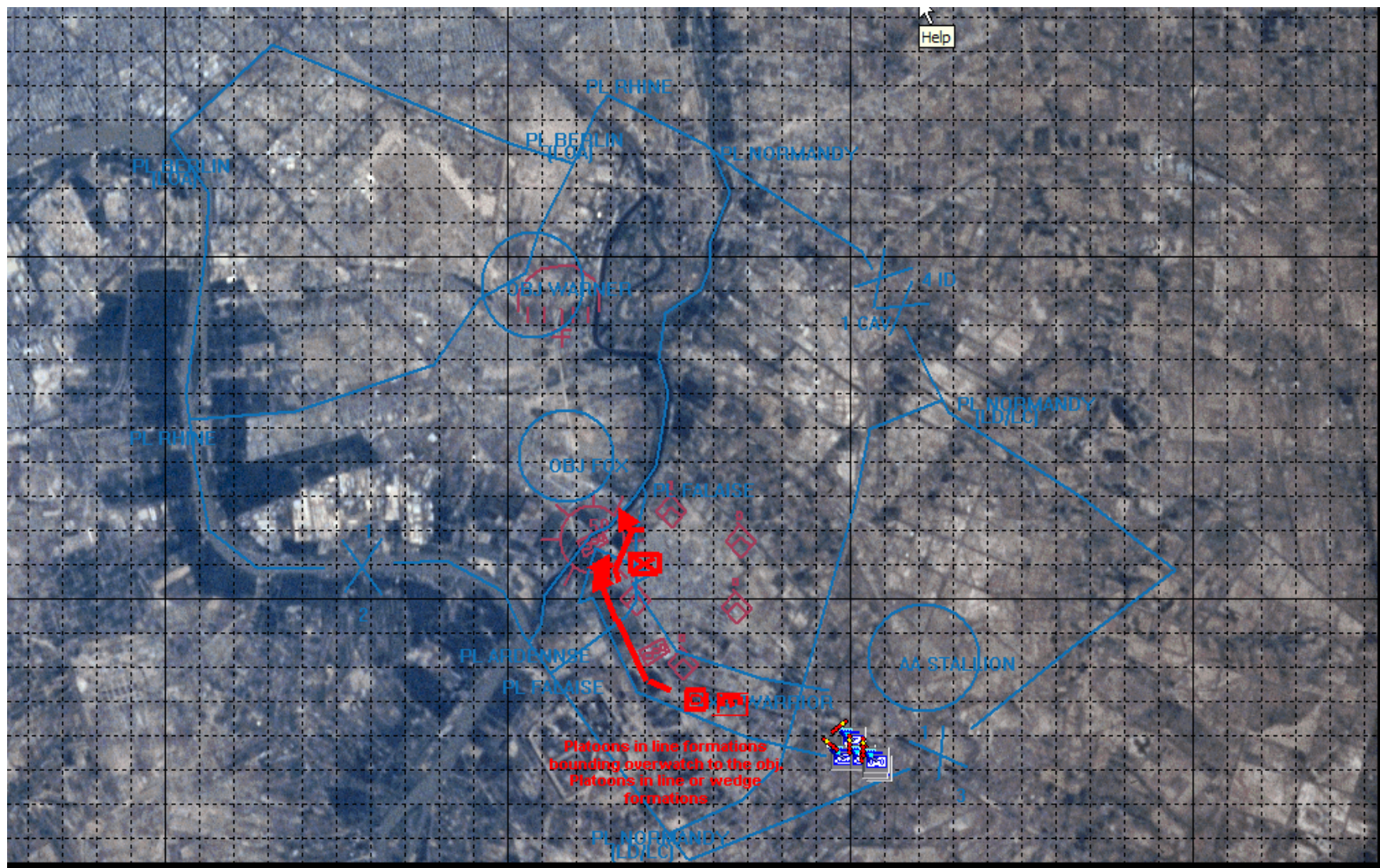


Phase 2: Secure the breach site

Once both sides of AXIS WARRIOR are cleared of enemy fighters move the friendly fire teams into a support by fire position overlooking the bridge at PL ARDENNES. Now the objective is continue clearing AXIS WARRIOR of any new enemy fighters and to secure the breachsite with your armor and mech units to allow sufficient freedom of maneuver to your engineers that they can complete the breach at the bridge at PL ARDENNES. Send your mech and armor platoons down AXIS WARRIOR in platoons, in either line or wedge formation, using bounding overwatch. Have the ENG



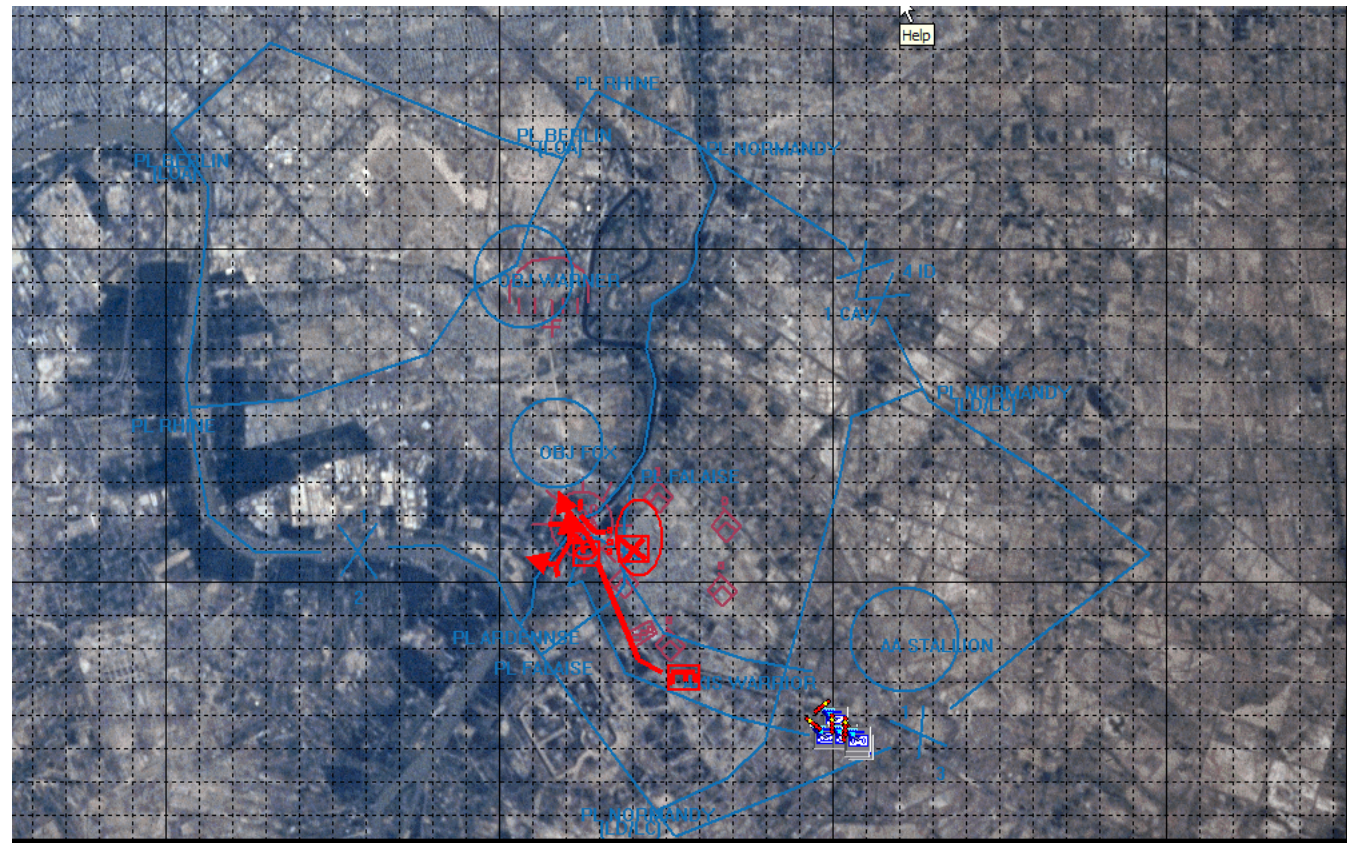
platoons stay behind at this point. Once the armor and mech units are at the bridge have them form into a support by fire position overlooking the river bank to the right side of the bridge.

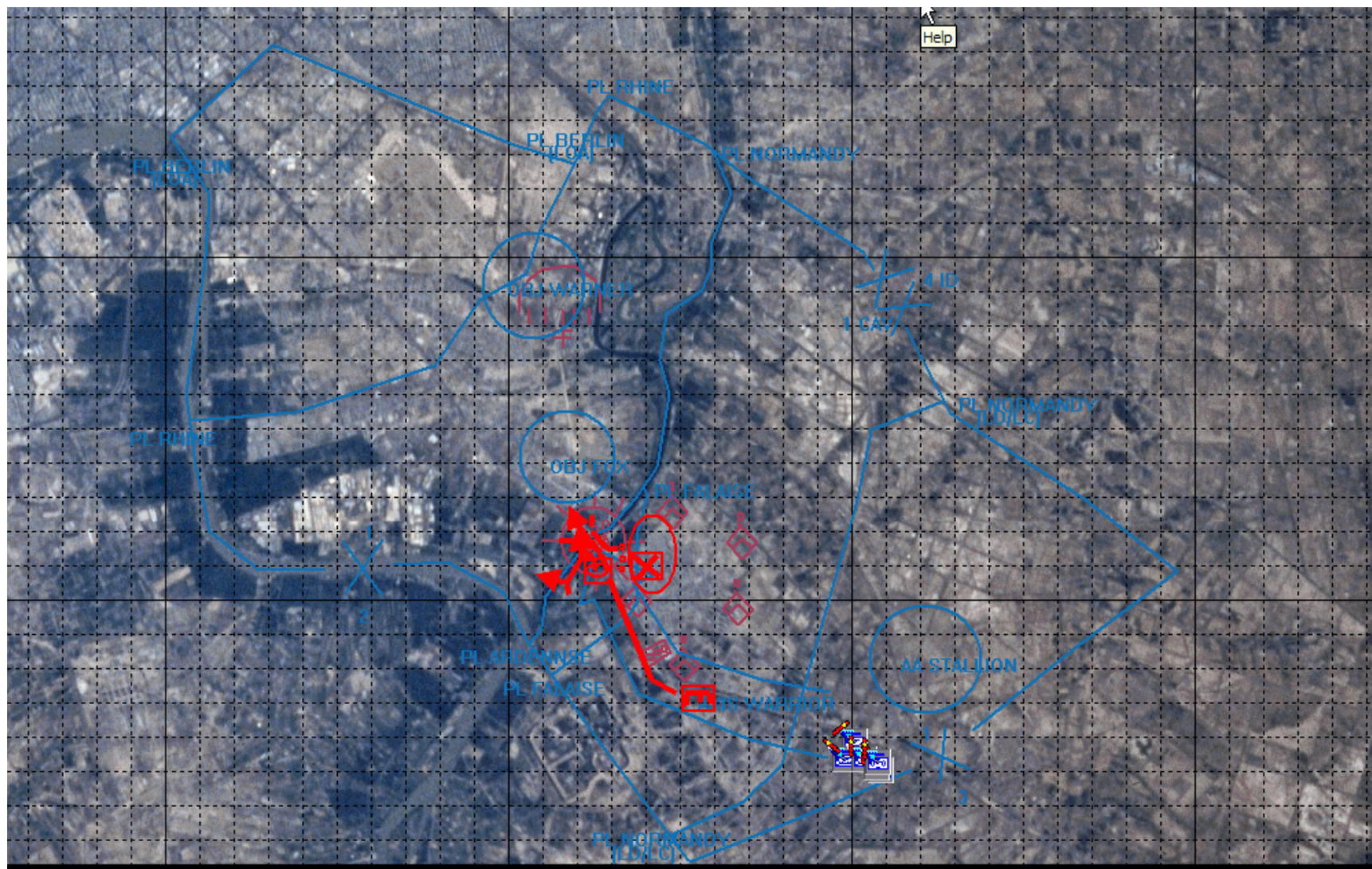


Phase 3: Breach the obstacle belt

Now the objective is to complete a breach at the bridge at PL ARDENNES. Bring the ENG platoons up in line formation to maximize the number of lines cut through the obstacles. Once on the other side of the bridge obstacles they can take any suitable cover.

While the engineers are breaching use the mech and armor platoons on the left side of the bridge to suppress any infantry on the left river bank. Use the friendly infantry in the SBF position to the right to suppress any enemy positions directly in front of the engineers and on the right river bank.



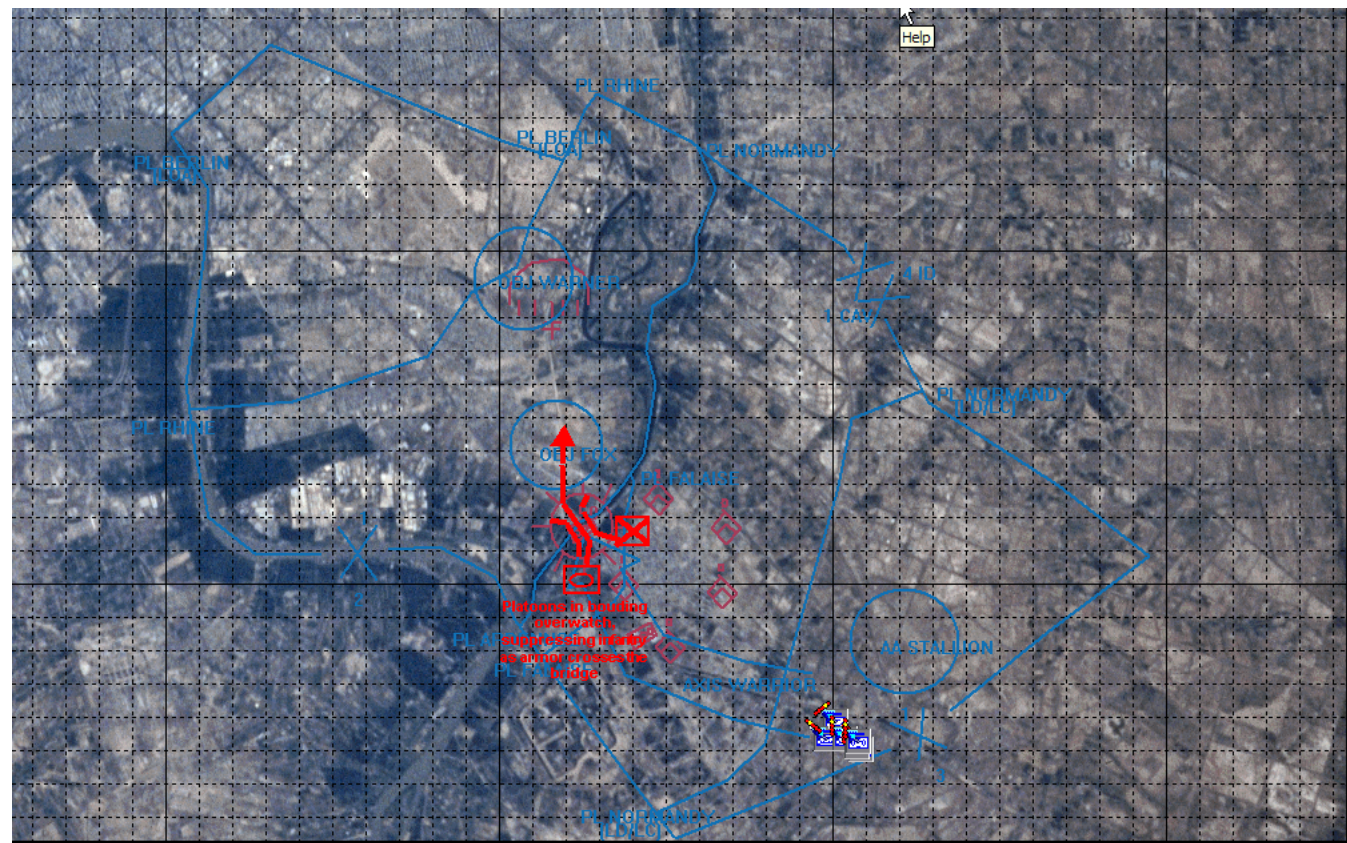


Phase 4: Assault to secure OBJ FOX

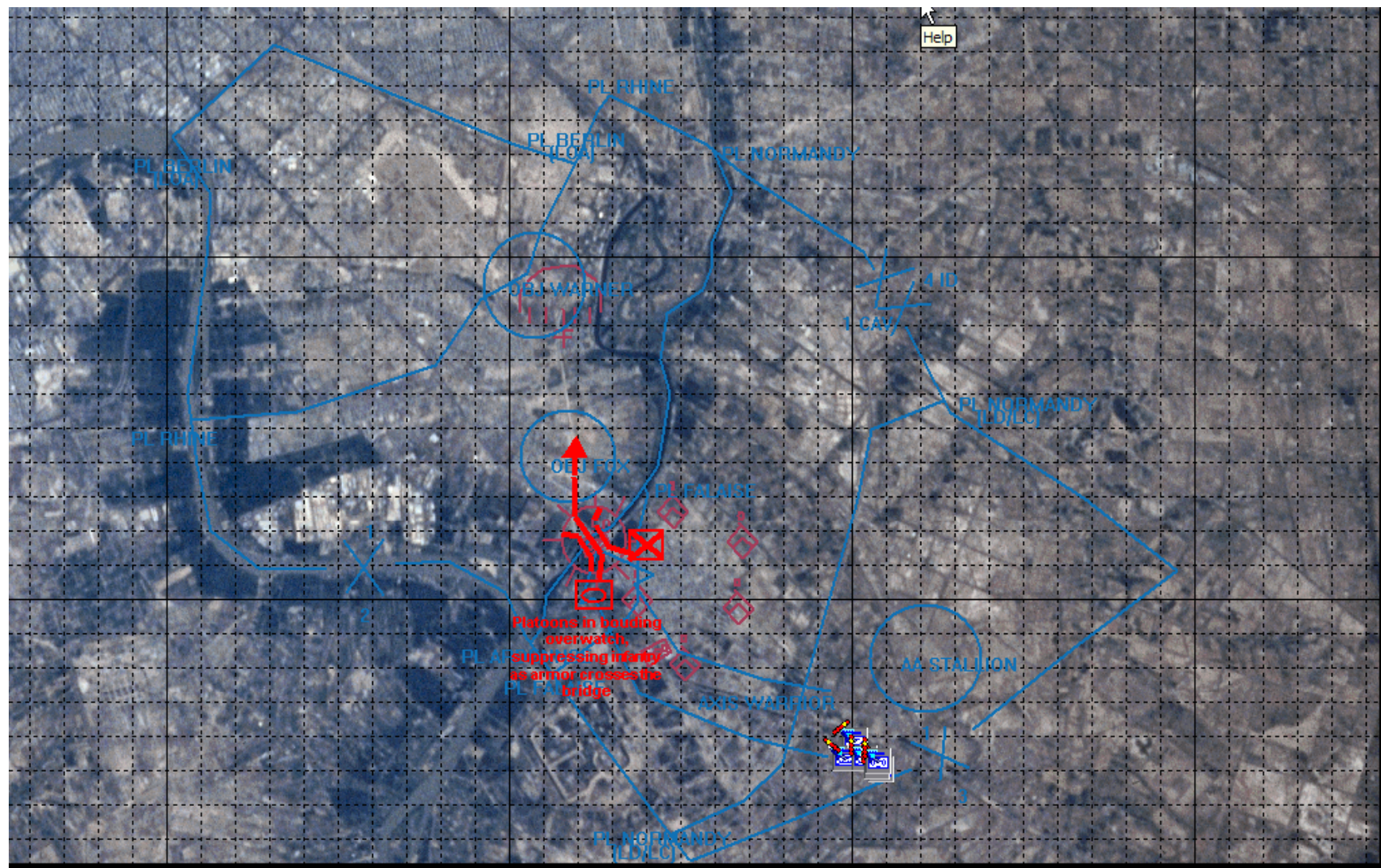
Your current objective should be to destroy the enemy forces on the far side of the bridge at PL ARDENNES and assault to secure OBJ FOX, to facilitate the continued attack to secure OBJ WARNER.

First bring your armor and mech platoons over, one by one, using bounding overwatch. Continue to use the infantry platoon on the right riverbank to suppress enemy.

Finally, bring your fire teams across the bridge and have them clear the areas in OBJ FOX around the runways before your armor or mech units go onto them.



Do not put any armor or mech units on the runways before all surrounding cover has been cleared of enemy units.



For the purist I have provided the following situation picture with the operation/maneuver graphics in blue and enemy SITTEMP in red.

